

ACCENT ESSENTIAL 55



Practical economy solution, ideal for semi-commercial areas

SENSORIAL BENEFITS

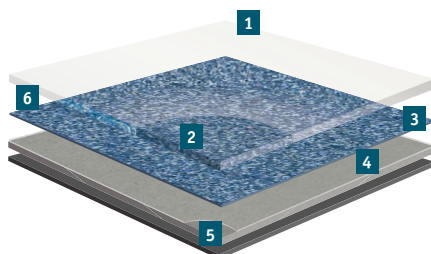
- Available in 2, 3 and 4 meter widths
- Harmonious chip decors

FUNCTIONAL BENEFITS

- Good underfoot & acoustic comfort
- Good cleaning & maintenance properties
- Competitively priced solution

ENVIRONMENTAL BENEFITS

- REACH Compliant
- Better indoor air quality



- 1 Easy maintenance and very high resistance to scratches:**
TopClean PUR reinforcement treatment
- 2 Resistance to abrasion:**
0.55mm pure PVC transparent wear layer
- 3 High definition print**
- 4 Superior dimensional stability ($\leq 0.40\%$):**
Glass fibre non-woven reinforcement
- 5 Resistance to indentation and tearing:**
Solid homogeneous calendared sheet made of recycled vinyl
- 6 PVC Backing**

TECHNICAL DATA	STANDARDS	ACCZENT ESSENTIAL 55
Classification		
Type of floor covering	ISO 10582 Type I / EN 649	Heterogeneous Compact Vinyl
Classification	ISO 10874 (EN 685) commercial industrial	Classes: 33 42
Characteristics		
Total thickness	ISO 24346 (EN 428)	2.00mm
Wear layer thickness	ISO 24340 (EN430)	0.55mm
Total weight	ISO 23997 (EN 430)	2 300g/m ²
PU treatment	-	TopClean
Abrasion group	EN 660-2	Group T: ≤ 2mm ³
Technical performances		
Residual indentation	Average measured value	≤ 0.10mm
	ISO 24343-1 (EN 433) requirement	
Reaction to fire	EN 13501-1	C _{fl} s1 glued over any A2 _{fl} or A1 _{fl} substrate (concrete) and over any derivative wood substrate
Slip resistance	DIN 51130 EN 13893	R9 μ ≥ 0.30
Dimensional stability	ISO 23999 (EN 434)	≤ 0.40%
Castor wheel test	ISO 4918 (EN 425)	No damage
Curl resultant to heat	ISO 23999 (EN 434)	≤ 8mm
Electrostatic properties	EN 1815 EN 1081	≤ 2kV on concrete R1 > 10 ⁹ ohms
Chemical resistance	ISO 26987 (EN 423)	High resistance
Hygiene	-	Does not contribute to infection spreading
Thermal resistance Underfloor heating	EN ISO 10456	0.02m ² K/W Suitable
Light fastness	EN ISO 105-B02	≥ 6
Impact sound reduction	EN ISO 10140-3 EN ISO 717/2	ΔL _w = 10dB
Form of delivery	EN 24341 (EN 426)	approx. 25lm x 2/3/4m
Colours		11

The above information is subject to modifications for the benefit of further improvement (07/2015).
For more detailed technical information, please contact Tarkett.



Download the product offer

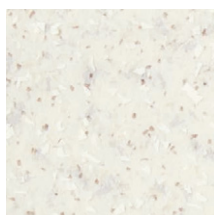
ACCENT ESSENTIAL 55



Crystal - Beige



Crystal



White

- 24553 001
- 24552 001
- 24551 001



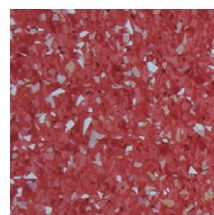
Sky Blue

- 24553 002
- 24552 002
- 24551 002



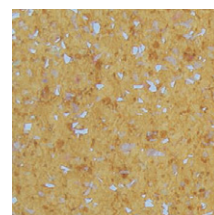
Soft Grey

- 24553 003
- 24552 003
- 24551 003



Cherry

- 24553 004
- 24552 004
- 24551 004



Lemon

- 24553 005
- 24552 005
- 24551 005



Beige

- 5752 003
- 5751 002
- 5705 002



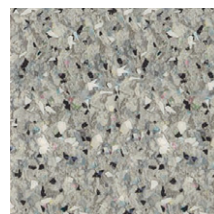
Gold

- 5752 004
- 5751 003
- 5705 003



Pearl

- 5752 006
- 5751 010
- 5705 010



Grey

- 5752 005
- 5751 014
- 5705 014

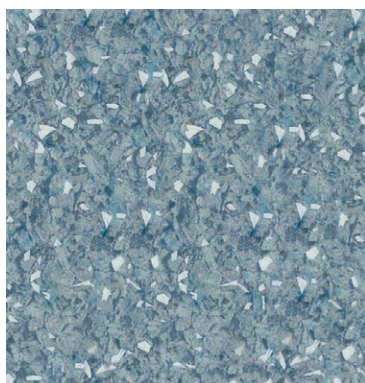


Anthracite




- 5752 011
- 5751 015
- 5705 015

TECHNICAL DATA	STANDARDS	ACCZENT ESSENTIAL 55
Classification		
Type of floor covering	ISO 10582 Type I / EN 649	Heterogeneous Compact Vinyl
Classification	ISO 10874 (EN 685) commercial industrial	Classes: 33 42
Characteristics		
Total thickness	ISO 24346 (EN 428)	2.00mm
Wear layer thickness	ISO 24340 (EN430)	0.55mm
Total weight	ISO 23997 (EN 430)	2 300g/m ²
PU treatment	-	TopClean
Abrasion group	EN 660-2	Group T: ≤ 2mm ³
Technical performances		
Residual indentation	Average measured value	≤ 0.10mm
	ISO 24343-1 (EN 433) requirement	
Reaction to fire	EN 13501-1	C _s s1 glued over any A2 _{fl} or A1 _{fl} substrate (concrete) and over any derivative wood substrate
Slip resistance	DIN 51130 EN 13893	R9 μ ≥ 0.30
Dimensional stability	ISO 23999 (EN 434)	≤ 0.40%
Castor wheel test	ISO 4918 (EN 425)	No damage
Curl resultant to heat	ISO 23999 (EN 434)	≤ 8mm
Electrostatic properties	EN 1815 EN 1081	≤ 2kV on concrete R1 > 10 ⁹ ohms
Chemical resistance	ISO 26987 (EN 423)	High resistance
Hygiene	-	Does not contribute to infection spreading
Thermal resistance Underfloor heating	EN ISO 10456	0.02m ² K/W Suitable
Light fastness	EN ISO 105-B02	≥ 6
Impact sound reduction	EN ISO 10140-3 EN ISO 717/2	ΔL _w = 10dB

The above information is subject to modifications for the benefit of further improvement (07/2015).
For more detailed technical information, please contact Tarkett.



Dark Blue

-  5752 009
-  5751 011
-  5705 011

ACCZENT ESSENTIAL 55 Crystal

Main Product Features

- Comfortable floor with 10dB acoustic
- Available in 2, 3 and 4 meter widths
- “Crystal” inlaid designs

Surface Treatment



Sustainability Tag



(1) For all products produced in 2015

Logistics Information



Available in rolls:
2m, 3m & 4m
Rolls length: 25lm

Laying direction:



General Information



According to European
Classification ISO 10874 (EN 685)



Play with the Room Designer