

WALL PROTECTIONS





WALL PROTECTIONS

Wallgard

p. 298

ProtectWALL

p. 300



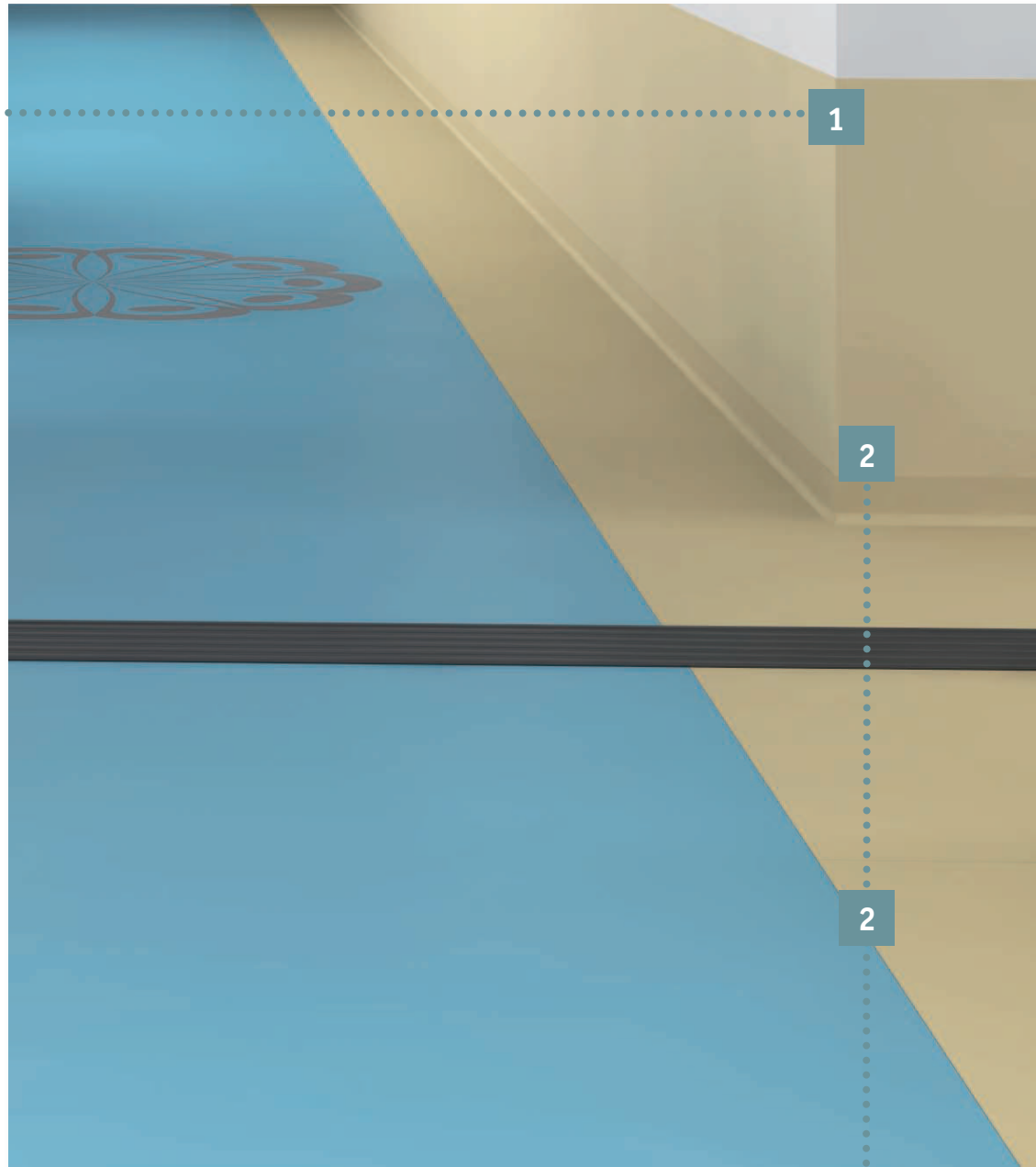
OUR SELECTION OF ACCESSORIES



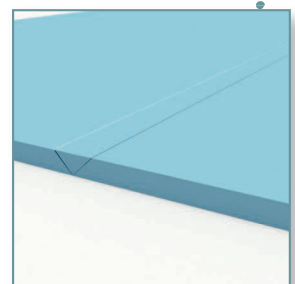
Set-in corner

Protects the external corner of walls vs impacts and provides neat finish. Installed under the wall covering.

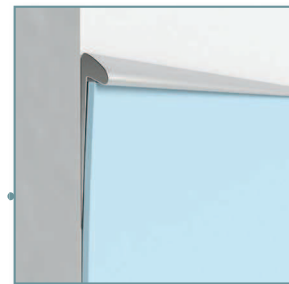
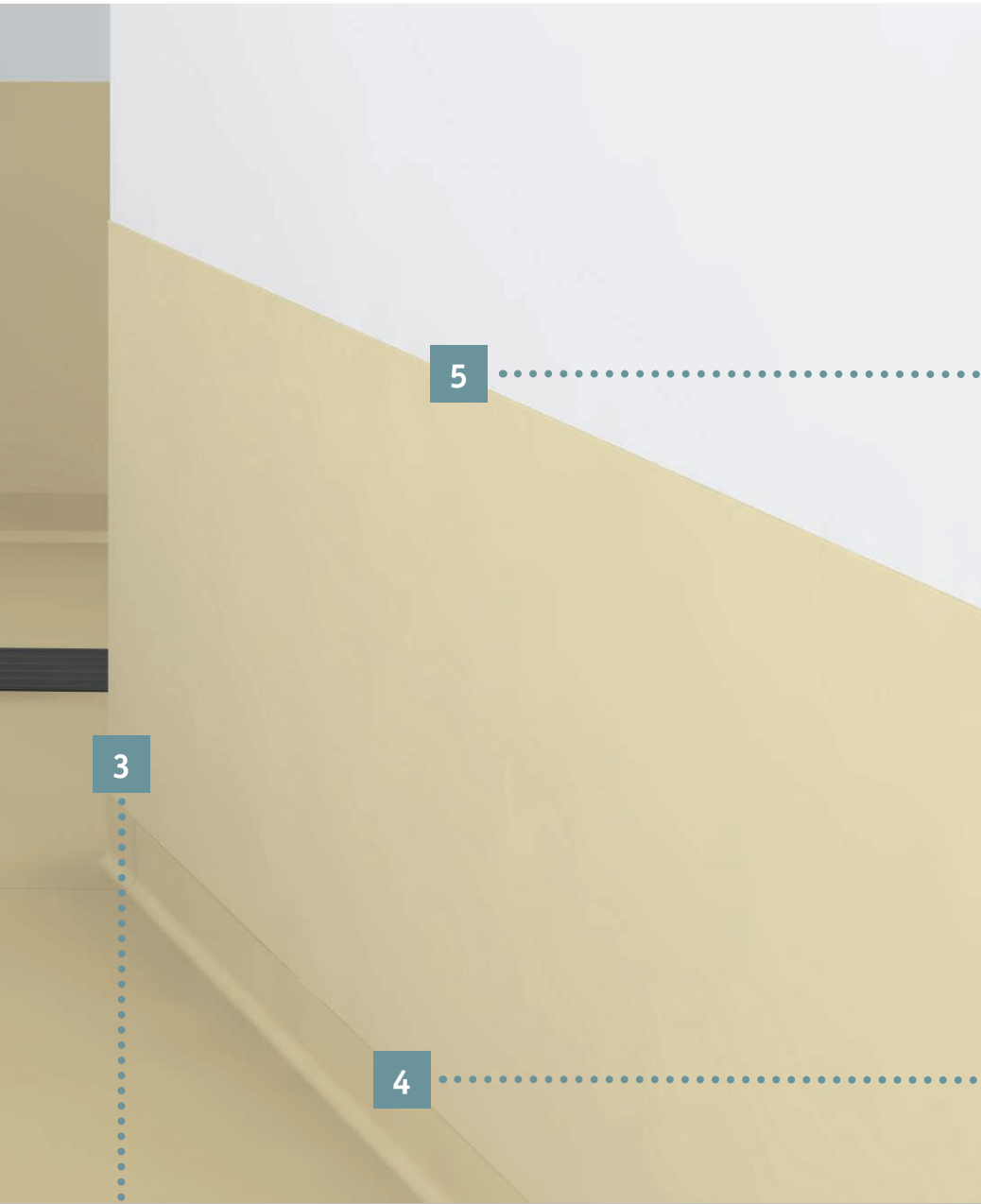
See p. 513 for detailed info



Welding rod
Secures the junction between 2 rolls of floor coverings or wall and floor coverings.



FOR WALL PROTECTIONS



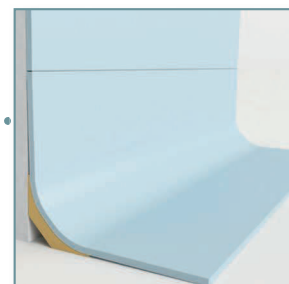
ProtectWALL

Protects the wall from impacts.

Cap

Provides a perfect finish and protects the edge of the wall covering.

See p. 512 for detailed info



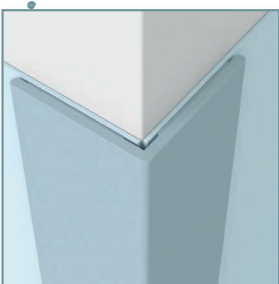
Cove former

PA20

Improves hygiene inside wall corner and makes maintenance easier.

See p. 496 for detailed info

3



Set-on corner

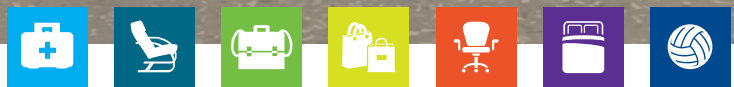
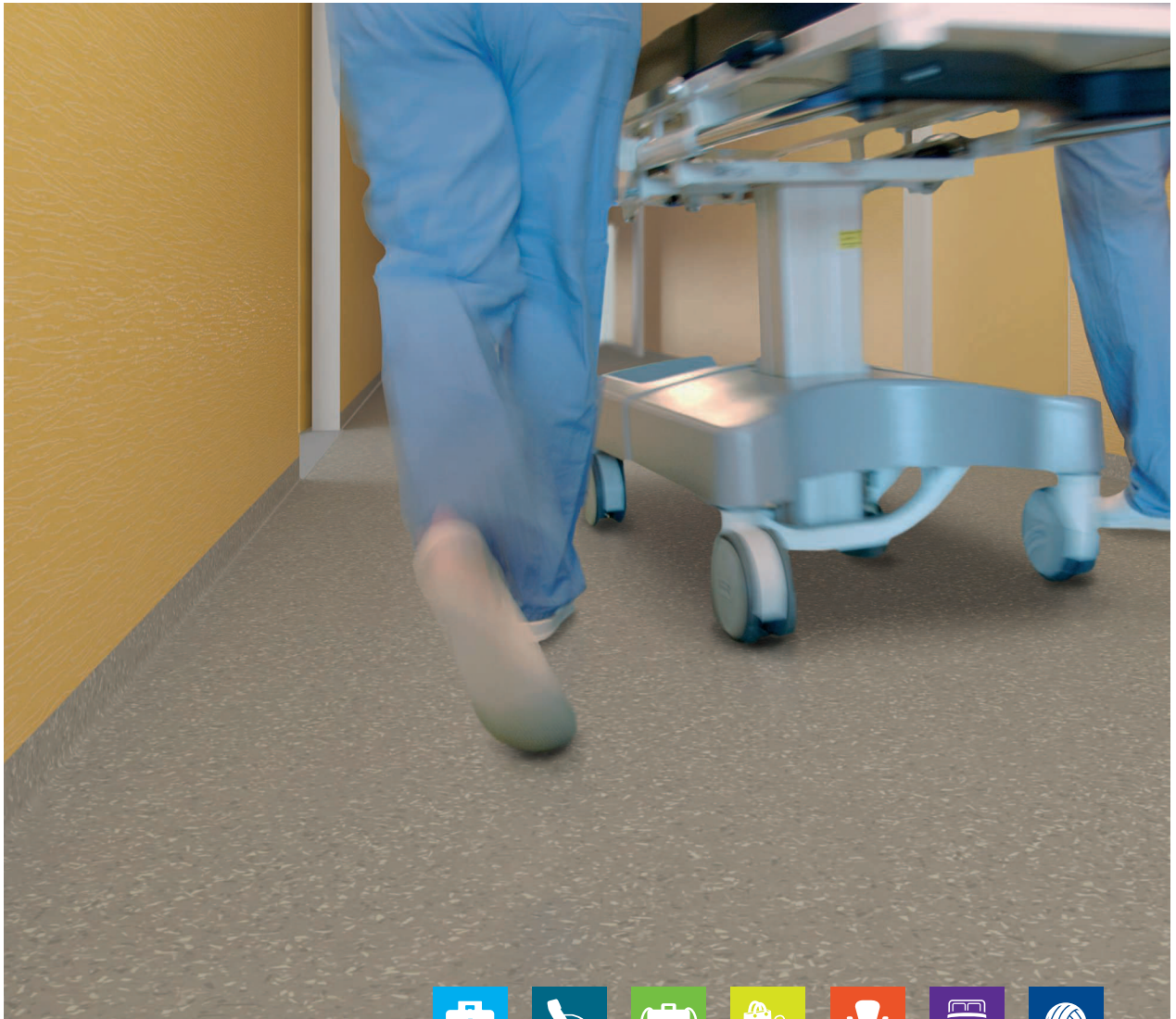
Protects the external corner of walls vs impacts and provides neat finish. Installed over the wall covering.

See p. 513 for detailed info

4

5

WALL PROTECTIONS



Wallcovering solutions designed to suit all wall conditions and offer protection for healthcare and education environments

SENSORIAL BENEFITS

- Attractive and functional designs
- Colour coordination with other Tarkett ranges
- Wide range of accessories

FUNCTIONAL BENEFITS

- High performance protection from staining and mechanical damage
- ProtectWALL 2CR option for clean rooms
- Easy to install
- Easy to clean and maintain

ENVIRONMENTAL BENEFITS

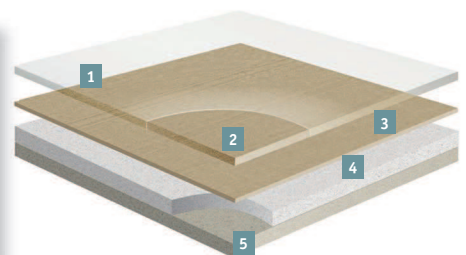
- Unrivalled indoor air quality
- Improved carbon footprint



Homogeneous vinyl flooring with PU-Shield surface treatment for hygienic and watertight system

WALLGUARD

- 1 TopClean XP Pur reinforced surface: Excellent resistance to scuffing, soiling and staining and easy maintenance.
- 2 Transparent wear layer
- 3 Printed film
- 4 Intermediate layer
- 5 Backing layer



PROTECTWALL 1.5mm

TECHNICAL DATA	STANDARDS	Wallgard	ProtectWALL 1.5mm	ProtectWALL 2mm	ProtectWALL 2 CR (Clean Room)
Description					
Description	EN 15102	-	Compact, flexible, calandered, multilayer protection Wallcovering		
Characteristics					
Total thickness	ISO 24346 (EN 428)	1.3mm	1.50mm	2.00mm	2.00mm
Total weight	ISO 23997 (EN 430)	2 210g/m ²	2 400g/m ²	3 000g/m ²	3 000g/m ²
Transparent wear layer	ISO 24340 (EN 429)	1.3mm	0.35mm	0.55mm	0.55mm
Surface Treatment	—	PU-Shield	TopClean XP™		
Technical performances					
Dimensional stability	ISO 23999 (EN 434)	≤ 0.40%	≤ 0.80% Lengthwise		
Curl resultant to heat	EN 424	-	≤ 2mm		
Wetroom test	GBR Class VT	Approved	-		
Reaction to fire	EN ISO 13501-1 BS 476: Part 7 AS/NZS 3837 UNI 8457 ASTM E84	Class B s2 d0 Class 1 Class B Class 1 Class B	Bs3d0		
Abrasion	EN 660-2	-	Group T: ≤ 2mm ³		
Thermal resistance	EN 12524	-	0.02m ² K/W		
Electrostatic properties	EN 1815	-	≤ 2kV		
Light fastness	EN ISO 105-B02	≥ 7	≥ 6		
Resistance to impacts	EN 259-2 / ASTM D 4226	-	Resistant to impacts No visible bursts nor cracks		
Scratch resistance	—	-	Sclerometer test: Excellent No visible scratch with naked eye		
Scuff resistance	—	-	Excellent - No visible mark after cleaning		
Determination of Flexibility	ISO 24344 (EN 435)	-	No damage, no crack		
Determination of seam strength	EN 684	> 400 N/50 mm			
Stain resistance Chemical resistance	ISO 26987 (EN 423)	Excellent			
Spongeability washability Lyability brushability	EN 12956	-	No change in appearance		
Contamination control	En 14644-1	ISO Class 4 / GMP Class A			ISO Class 1 / GMP Class A
Ease of decontamination	ISO 8690		-	Good	
Clean room test	ASTM F24/65 ASTM F51/00	Satisfactory Class A	-		
Hygiene	—	Does not favour growth	Does not contribute to infection spreading		
Form of delivery					
	ISO 24341 (EN 426) Sheet (rolls)	Rolls: approx. 30lm x 2m	20 r m x 2m		
Colours	—	6	Tisse: 10 - Vital: 6 Graphic Lines: 2 - Uni: 1	Abstract: 12	Uni: 6

The above information is subject to modifications for the benefit of further improvement (07/2015).

For more detailed technical information, please contact Tarkett.

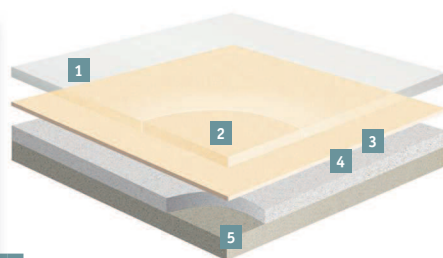
1 TopClean XP Pur reinforced surface:
Excellent resistance to scuffing, soiling and staining and easy maintenance.

1 Transparent wear layer

2 Printed film

3 Intermediate layer

4 Backing layer



Download the product offer

PROTECTWALL 2mm AND 2CR



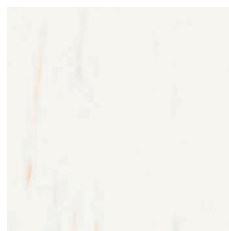
Wallgard - 3388 014



3388 011



3388 012



3388 013



3388 014



3388 015

TECHNICAL DATA	STANDARDS	Wallgard
Characteristics		
Total thickness	ISO 24346 (EN 428)	1.3mm
Total weight	ISO 23997 (EN 430)	2 210g/m ²
Transparent wear layer	ISO 24340 (EN 429)	1.3mm
Surface Treatment	—	PU-Shield
Technical performances		
Dimensional stability	ISO 23999 (EN 434)	≤ 0.40%
Wetroom test	GBR Class VT	Approved
Reaction to fire	EN ISO 13501-1 BS 476: Part 7 AS/NZS 3837 UNI 8457 ASTM E84	Class B s2 d0 Class 1 Class B Class 1 Class B
Light fastness	EN ISO 105-B02	≥ 7
Stain resistance Chemical resistance	ISO 26987 (EN 423)	Excellent
Determination of seam strength	EN 684	> 400 N / 50 mm
Contamination control	En 14644-1	ISO Class 4 / GMP Class A
Clean room test	ASTM F24/65 ASTM F51/00	Satisfactory Class A
Hygiene	—	Does not favour growth

The above information is subject to modifications for the benefit of further improvement (07/2015).
For more detailed technical information, please contact Tarkett.



 3388 016

WALLGARD

Main Product Features

- Impervious surface with PU-Shield
- Hygienic and watertight
- Easy to install - vertically or horizontally
- Attractive and functional design

Surface Treatment



Sustainability Tag



Logistics Information



Available in rolls
Rolls length: approx. 30lm

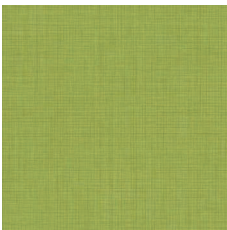
General Information



Play with the Room Designer



Tissé 1.5mm



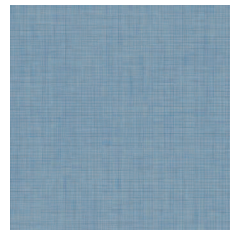
26500 009



26500 003



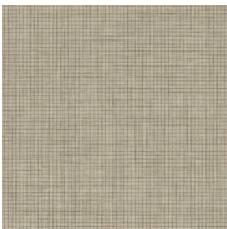
26500 004



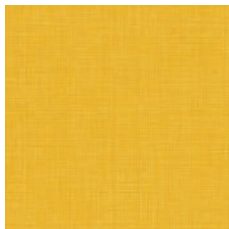
26500 010



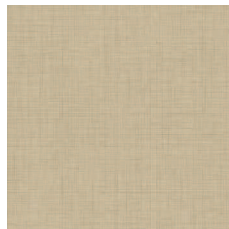
26500 005



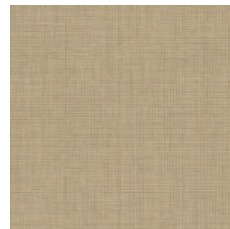
26500 006



26500 008



26500 001

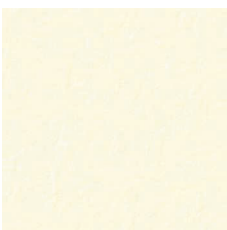


26500 002

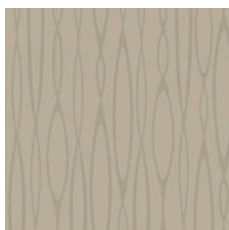


26500 007

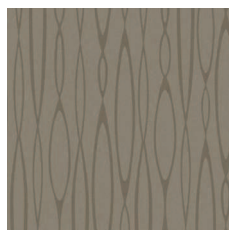
Uni 1.5mm



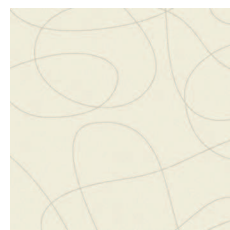
26500 021



26500 019



26500 020

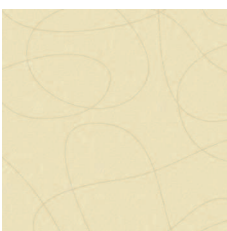


26500 013

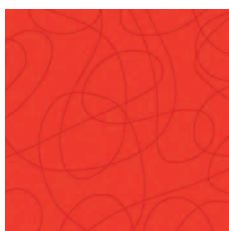


26500 017

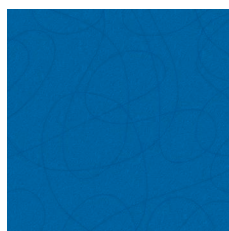
Graphic Lines 1.5mm



26500 011



26500 016



26500 018

Vital 1.5mm

TECHNICAL DATA	STANDARDS	ProtectWALL 1.5mm
Description		
Description	EN 15102	Compact, flexible, calandered, multilayer protection Wallcovering
Characteristics		
Total thickness	ISO 24346 (EN 428)	1.50mm
Total weight	ISO 23997 (EN 430)	2 400g/m ²
Transparent wear layer	ISO 24340 (EN 429)	0.35mm
Surface Treatment	—	TopClean XP™
Technical performances		
Dimensional stability	ISO 23999 (EN 434)	≤ 0.80% Lengthwise
Curl resultant to heat	EN 424	≤ 2mm
Reaction to fire	EN ISO 13501-1 BS 476: Part 7 AS/NZS 3837 UNI 8457 ASTM E84	Bs3d0
Abrasion	EN 660-2	Group T: ≤ 2mm ³
Thermal resistance	EN 12524	0.02 m ² K/W
Electrostatic properties	EN 1815	≤ 2 kV
Light fastness	EN ISO 105-B02	≥ 6
Resistance to impacts	EN 259-2 / ASTM D 4226	Resistant to impacts No visible bursts or cracks
Scratch resistance	—	Sclerometer test: Excellent No visible scratch with naked eye
Scuff resistance	—	Excellent - No visible mark after cleaning
Determination of Flexibility	ISO 24344 (EN 435)	No damage, no crack
Determination of seam strength	EN 684	> 400 N/50 mm
Stain resistance Chemical resistance	ISO 26987 (EN 423)	Excellent
Spongeability washability Lyability brushability	EN 12956	No change in appearance
Hygiene	—	Does not contribute to infection spreading

The above information is subject to modifications for the benefit of further improvement (07/2015).
For more detailed technical information, please contact Tarkett.

Vital 1.5mm



 26500 015

PROTECTWALL 1.5mm

Main Product Features

- Impact and scratch resistant
- Stain and chemical resistant
- PUR surface treatment for easy cleaning and maintenance
- Colour coordination with various Tarkett ranges for one global design solution
- Reduced damage to walls = lower repair and maintenance costs

Surface Treatment



Sustainability Tag



(1) For all products produced in 2015

Logistics Information



Available in rolls
Rolls length: approx. 20lm

Laying direction:



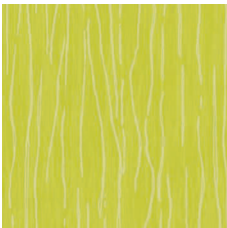
Play with the Room Designer



ProtectWALL 2CR - 26501 005



Abstract 2mm



26501 016



26501 018



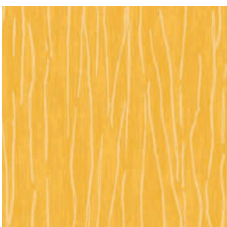
26501 010



26501 009



26501 013



26501 014



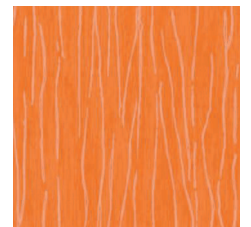
26501 012



26501 011

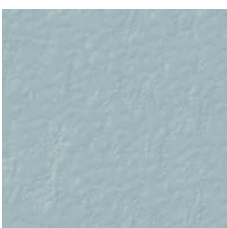


26501 017

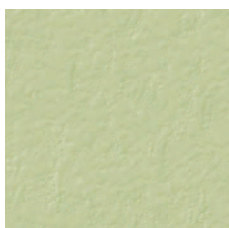


26501 015

Uni 2mm CR (Clean Room)



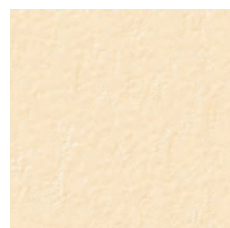
26501 006



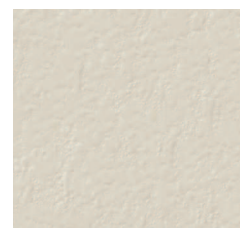
26501 005



26501 004



26501 003



26501 002

PROTECTWALL 2mm and 2CR

Main Product Features

- Impact and scratch resistant
- Stain and chemical resistant
- Available in 2.00mm and 2mm CR (Clean Room) versions
- PUR surface treatment for easy cleaning and maintenance
- Colour coordination with various Tarkett ranges for one global design solution
- Reduced damage to walls = lower repair and maintenance costs

Surface Treatment



Sustainability Tag



(1) For all products produced in 2015

Logistics Information



Available in rolls
Rolls length: approx. 20lm

Laying direction:

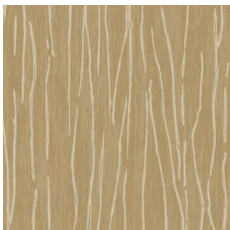


TECHNICAL DATA	STANDARDS	ProtectWALL 2mm	ProtectWALL 2 CR (Clean Room)
Description			
Description	EN 15102	Compact, flexible, calandered, multilayer protection Wallcovering	Compact, flexible, calandered, multilayer protection Wallcovering
	EN 14644-1	-	Class 1, GMP class A
Characteristics			
Total thickness	ISO 24346 (EN 428)	2.00mm	
Total weight	ISO 23997 (EN 430)	3 000g/m ²	
Transparent wear layer	ISO 24340 (EN 429)	0.55mm	
Surface Treatment	—	TopClean XP™	
Technical performances			
Dimensional stability	ISO 23999 (EN 434)	≤ 0.80% Lengthwise	
Curl resultant to heat	EN 424	≤ 2mm	
Reaction to fire	EN ISO 13501-1	Bs3d0	
Abrasion	EN 660-2	Group T: ≤ 2mm ³	
Thermal resistance	EN 12524	0.02 m ² K/W	
Electrostatic properties	EN 1815	≤ 2 kV	
Light fastness	EN ISO 105-B02	≥ 6	
Resistance to impacts	EN 259-2 / ASTM D 4226	Resistant to impacts No visible bursts or cracks	
Scratch resistance	—	Sclerometer test: Excellent No visible scratch with naked eye	
Scuff resistance	—	Excellent - No visible mark after cleaning	
Determination of Flexibility	ISO 24344 (EN 435)	No damage, no crack	
Determination of seam strength	EN 684	> 400 N/50mm	
Stain resistance Chemical resistance	ISO 26987 (EN 423)	Excellent	
Spongeability washability Lyability brushability	EN 12956	No change in appearance	
Contamination control	En 14644-1	-	ISO Class 1 / GMP Class A
Ease of decontamination	ISO 8690	-	Good
Hygiene	—	Does not contribute to infection spreading	

The above information is subject to modifications for the benefit of further improvement (07/2015).

For more detailed technical information, please contact Tarkett.

Abstract 2mm



26501 008

Uni 2mm CR (Clean Room)



26501 001



26501 007



Play with the Room Designer