

ACCZENT CLASSIC 40



Simply fit: a comfortable solution for smooth and safe daily light commercial or home use

SENSORIAL BENEFITS

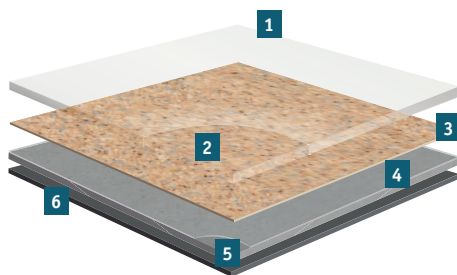
- Available in 2, 3 and 4 meter widths
- Large palette of classic and modern designs

FUNCTIONAL BENEFITS

- Good underfoot & acoustic comfort
- Good cleaning & maintenance properties

ENVIRONMENTAL BENEFITS

- REACH Compliant
- Better indoor air quality



- 1 Easy maintenance and very high resistance to scratches:**
TopClean PUR reinforcement treatment
- 2 Resistance to abrasion:**
0.40mm pure PVC transparent wear layer
- 3 High definition print**
- 4 Superior dimensional stability ($\leq 0.40\%$):**
Glass fibre non-woven reinforcement
- 5 Resistance to indentation and tearing:**
Solid homogeneous calendared sheet made of recycled vinyl
- 6 PVC Backing**

ACCZENT CLASSIC 40

TECHNICAL DATA	STANDARDS	ACCENT CLASSIC 40
Classification		
Type of floor covering	ISO10582 Type I / EN649	Heterogeneous Compact Vinyl
Classification	ISO 10874 (EN 685) commercial	Class: 32
Characteristics		
Total thickness	ISO 24346 (EN 428)	2.00mm
Wear layer thickness	ISO 24340 (EN430)	0.40mm
Total weight	ISO 23997 (EN 430)	2 150g/m ²
PU treatment	-	TopClean
Abrasion group	EN 660-2	Group T: ≤ 2mm ³
Technical performances		
Residual indentation	Average measured value	≤ 0.10mm
	ISO 24343-1 (EN 433) requirement	
Reaction to fire	EN 13501-1	C _s s1 glued over any A2 _n or A1 _n substrate (concrete) and over any derivative wood substrate
Slip resistance	DIN 51130 EN 13893	R10 μ ≥ 0.30
Dimensional stability	ISO 23999 (EN 434)	≤ 0.40%
Castor wheel test	ISO 4918 (EN 425)	No damage
Curl resultant to heat	ISO 23999 (EN 434)	≤ 8mm
Electrostatic properties	EN 1815 EN 1081	≤ 2kV on concrete R1 > 10 ¹⁰ ohms
Chemical resistance	ISO 26987 (EN 423)	High resistance
Hygiene	-	Does not contribute to infection spreading
Thermal resistance Underfloor heating	EN ISO 10456	0.02m ² K/W Suitable
Light fastness	EN ISO 105-B02	≥ 6
Impact sound reduction	EN ISO 10140-8 EN ISO 717/2	ΔL _w = 13dB
Form of delivery	EN 24341 (EN 426)	approx. 25lm x 2, 3 & 4m
Colours		34 (Wood: 13 - Rock: 3 - Antia: 1 - Moda: 11 - Technivision: 6)

The above information is subject to modifications for the benefit of further improvement (07/2015).

For more detailed technical information, please contact Tarkett.



Download the product offer

ACCZENT CLASSIC 40



Robur - Natural



Beech



Natural

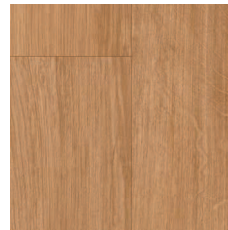
- 5620 001
- 5619 001
- 5618 001



Beige Yellow

- 5620 006
- 5619 006
- 5618 006

Oak



Dark Beige

- 5620 002
- 5619 002
- 5618 002

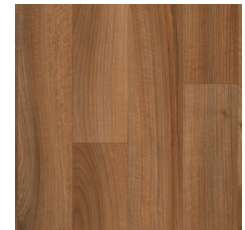
Classical Oak



Natural

- 5620 008
- 5619 008
- 5618 008

Noyer



Natural

- 5620 021
- 5619 021
- 5618 021

Robur



Natural

- 5620 023
- 5619 023
- 5618 023



Medium Natural

- 5620 027
- 5619 027
- 5618 027



White

- 5620 022
- 5619 022
- 5618 022



Light Natural

- 5620 028
- 5619 028
- 5618 028

Teak



Brown

- 5620 005
- 5619 005
- 5618 005

Gea



Light Brown

- 5620 003
- 5619 003
- 5618 003



Middle Beige

- 5620 024
- 5619 024
- 5618 024



Light Warm Brown

- 5620 025
- 5619 025
- 5618 025

Antia



Black

- 5620 011
- 5619 011
- 5618 011

TECHNICAL DATA	STANDARDS	ACCZENT CLASSIC 40
Classification		
Type of floor covering	ISO10582 Type I / EN649	Heterogeneous Compact Vinyl
Classification	ISO 10874 (EN 685) commercial	Class: 32
Characteristics		
Total thickness	ISO 24346 (EN 428)	2.00mm
Wear layer thickness	ISO 24340 (EN430)	0.40mm
Total weight	ISO 23997 (EN 430)	2 150g/m ²
PU treatment	-	TopClean
Abrasion group	EN 660-2	Group T: ≤ 2mm ³
Technical performances		
Residual indentation	Average measured value	≤ 0.10mm
	ISO 24343-1 (EN 433) requirement	
Reaction to fire	EN 13501-1	C _s s1 glued over any A2 _n or A1 _n substrate (concrete) and over any derivative wood substrate
Slip resistance	DIN 51130 EN 13893	R10 μ ≥ 0.30
Dimensional stability	ISO 23999 (EN 434)	≤ 0.40%
Castor wheel test	ISO 4918 (EN 425)	No damage
Curl resultant to heat	ISO 23999 (EN 434)	≤ 8mm
Electrostatic properties	EN 1815 EN 1081	≤ 2kV on concrete R1 > 10 ¹⁰ ohms
Chemical resistance	ISO 26987 (EN 423)	High resistance
Hygiene	-	Does not contribute to infection spreading
Thermal resistance Underfloor heating	EN ISO 10456	0.02m ² K/W Suitable
Light fastness	EN ISO 105-B02	≥ 6
Impact sound reduction	EN ISO 10140-8 EN ISO 717/2	ΔL _w = 13dB

The above information is subject to modifications for the benefit of further improvement (07/2015).
For more detailed technical information, please contact Tarkett.

Rock



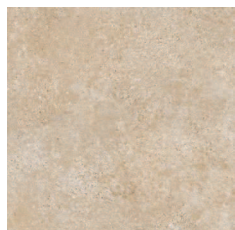
Snow Beige

- 5620 026
- 5619 026
- 5618 026



Grey Black

- 5620 020
- 5619 020
- 5618 020



Light Grey

- 5620 016
- 5619 016
- 5618 016

ACCZENT CLASSIC 40 Wood / Rock / Antia

Main Product Features

- Comfortable floor with 13dB acoustic
- Available in 2, 3 and 4 meter widths
- Woods & neutral designs

Surface Treatment



Sustainability Tag



(1) For all products produced in 2015

Logistics Information



Available in rolls:
2m, 3m & 4m
Rolls length: 25lm

Laying direction:



Wood

General Information



Play with the Room Designer

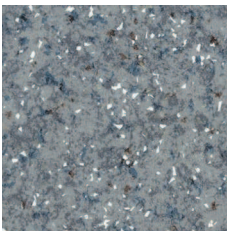
ACCZENT CLASSIC 40



Moda - Black



Moda



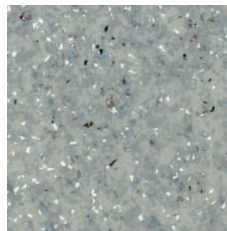
Anthracite

- 5719 001
- 5715 001
- 5708 001



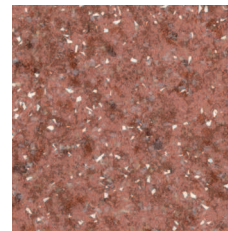
Light Grey

- 5719 002
- 5715 002
- 5708 002



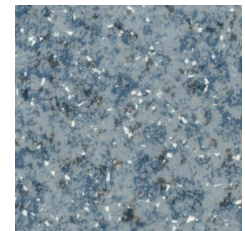
Grey

- 5719 004
- 5715 004
- 5708 004



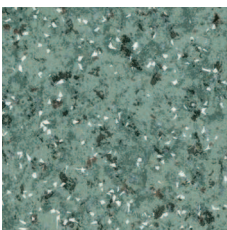
Red

- 5719 005
- 5715 005
- 5708 005



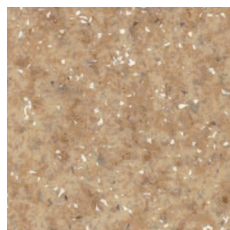
Blue

- 5719 006
- 5715 006
- 5708 006



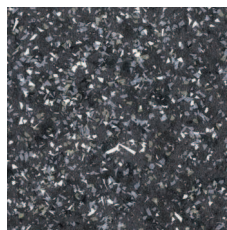
Green

- 5719 007
- 5715 007
- 5708 007



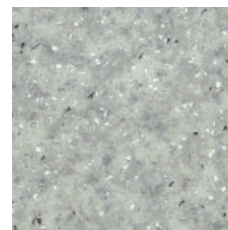
Beige Red

- 5719 008
- 5715 008
- 5708 008



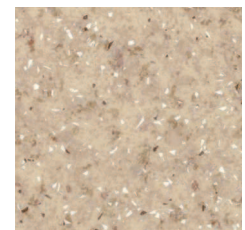
Black

- 5719 011
- 5715 011
- 5708 011



White

- 5719 013
- 5715 013
- 5708 013



Light Beige

- 5719 014
- 5715 014
- 5708 014

Techvision



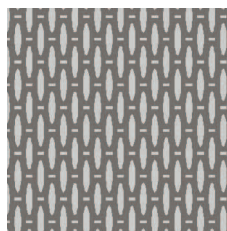
Soft Beige

- 5719 015
- 5715 015
- 5708 015



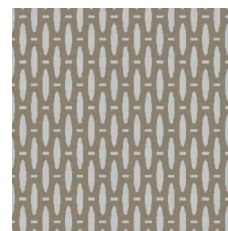
Metallic

- 27002 001
- 27001 001
- 27000 001



Dark Grey

- 27002 002
- 27001 002
- 27000 002



Gold

- 27002 003
- 27001 003
- 27000 003



Light Blue

- 27002 004
- 27001 004
- 27000 004




TECHNICAL DATA	STANDARDS	ACCZENT CLASSIC 40
Classification		
Type of floor covering	ISO10582 Type I / EN649	Heterogeneous Compact Vinyl
Classification	ISO 10874 (EN 685) commercial	Class: 32
Characteristics		
Total thickness	ISO 24346 (EN 428)	2.00mm
Wear layer thickness	ISO 24340 (EN430)	0.40mm
Total weight	ISO 23997 (EN 430)	2 150g/m ²
PU treatment	-	TopClean
Abrasion group	EN 660-2	Group T: ≤ 2mm ³
Technical performances		
Residual indentation	Average measured value	≤ 0.10mm
	ISO 24343-1 (EN 433) requirement	
Reaction to fire	EN 13501-1	C _s s1 glued over any A2 _n or A1 _n substrate (concrete) and over any derivative wood substrate
Slip resistance	DIN 51130 EN 13893	R10 μ ≥ 0.30
Dimensional stability	ISO 23999 (EN 434)	≤ 0.40%
Castor wheel test	ISO 4918 (EN 425)	No damage
Curl resultant to heat	ISO 23999 (EN 434)	≤ 8mm
Electrostatic properties	EN 1815 EN 1081	≤ 2kV on concrete R1 > 10 ¹⁰ ohms
Chemical resistance	ISO 26987 (EN 423)	High resistance
Hygiene	-	Does not contribute to infection spreading
Thermal resistance Underfloor heating	EN ISO 10456	0.02m ² K/W Suitable
Light fastness	EN ISO 105-B02	≥ 6
Impact sound reduction	EN ISO 10140-8 EN ISO 717/2	ΔL _w = 13dB

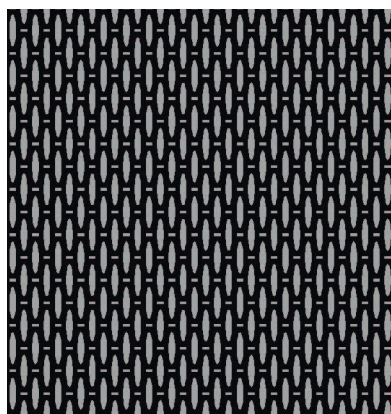
The above information is subject to modifications for the benefit of further improvement (07/2015).
For more detailed technical information, please contact Tarkett.

Techvision






Dark Brown

-  27002 005
-  27001 005
-  27000 005



Black

-  27002 006
-  27001 006
-  27000 006

ACCZENT CLASSIC 40 Moda Techvision

Main Product Features

- Comfortable floor with 13dB acoustic
- Available in 2, 3 and 4 meter widths
- Woods & neutral designs

Surface Treatment



Sustainability Tag



(1) For all products produced in 2015

Logistics Information



Available in rolls:
2m, 3m & 4m
Rolls length: 25lm

Laying direction:



General Information



According to European Classification ISO 10874 (EN 685)



Play with the Room Designer