

TX MODULAIRE



The ideal acoustic solution for renovation of housing

SENSORIAL BENEFITS

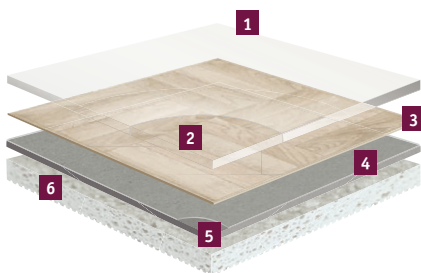
- Wide range of colours and designs, in line with the latest decoration trend

FUNCTIONAL BENEFITS

- Range available in roll, plank and tile format to enhance creativity
- Improved acoustic performance (up to 20db)

ENVIRONMENTAL BENEFITS

- TopClean XP™ protection avoiding excessive use of chemicals or cleaning solvents for maintenance
- Low VOC emissions improving the indoor air quality
- Phthalate-free technology
- ReStart® programme



- 1 TopClean XP PUR reinforcement:**
very high resistance to scratches and easy maintenance
- 2 Pure PVC transparent wear layer:**
resistance to abrasion
- 3 High definition print:**
for perfect designs
- 4 Glass fibre non-woven reinforcement:**
superior dimensional stability
- 5 Solid homogeneous calendered sheet made of recycled vinyl:**
resistance to indentation and tearing
- 6 High density closed-cell foam backing:**
sound reduction and comfort underfoot

TX MODULAIRE

| TECHNICAL DATA | STANDARDS | TX Modulaire | |
|--|--|--|----------|
| | | Tile | Plank |
| Classification | | | |
| Type of floor Covering | ISO 11638 (EN 651) | | |
| Classification | ISO 10874 (EN 685) domestic commercial | Classes: 23 31 | |
| Characteristics | | | |
| Total thickness | ISO 24346 (EN 428) | 3.05mm | |
| Wear layer thickness | ISO 24340 (EN 429) | 0.27mm | |
| Total weight | ISO 23997 (EN 430) | 2 575g/m ² | |
| PUR Reinforcement | – | TopClean XP™ | |
| Abrasion group | EN 660-2 | Group T: ≤ 2mm ³ | |
| Technical performances | | | |
| Residual indentation | Average measured value | 0.12mm | |
| | Best measured value | 0.10mm | |
| | ISO 24343-1 (EN 433) requirement | ≤ 0.25mm | |
| Reaction to fire | EN 13501-1 | B _f s1 glued over any A2 _f or A1 _f substrate (concrete) & C _f s1 glued over any derivate wood substrate | |
| Slip resistance | DIN 51130 EN 13893 | R9 ≥ 0.30 | |
| Dimensional stability | ISO 23999 (EN 434) | < 0.10% | |
| Furniture leg | EN 424 | No damage | |
| Castor wheel test | ISO 4918 (EN 425) | No damage | |
| Curl resultant to heat | ISO 23999 (EN 434) | < 2mm | |
| Electrostatic properties | EN 1815 EN 1081 | ≤ 2kV on concrete support R1 > 10 ⁹ Ω | |
| Chemical resistance | ISO 26987 (EN 423) | High resistance | |
| Hygiene | – | Does not contribute to infection spreading | |
| Thermal resistance Underfloor heating | EN ISO 10456 | 0.04m ² K/W Suitable | |
| Light fastness | EN ISO 105-B02 | > 6 | |
| Impact sound reduction | EN ISO 717/2 | ΔLw = 20dB | |
| Acoustic improvement | NF S31-074 | L _{n,e,w} < 65dB | |
| Form of delivery | ISO 24341 (EN 426) | 33,33x33,33cm | 25x100cm |
| | ISO 24342 (EN 427) | 50x50cm | |

The above information is subject to modifications for the benefit of further improvement (07/2015).

For more detailed technical information, please contact Tarkett.



Play with the Room Designer

TX MODULAIRE



Minimal Wood - Beige, Natural



Parquet Bloc



Naturel

24083 201



Blanc

24083 202



Grey

24083 203



Light Natural

24080 007



Light

24080 002

Cascade



Grege

24082 018



Beige

24082 025



Gris

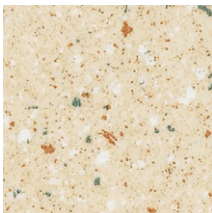
24082 028



Brun

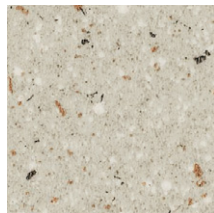
24082 020

Sahara



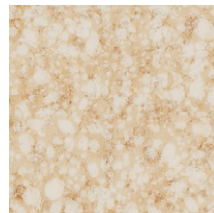
Sable

24082 003



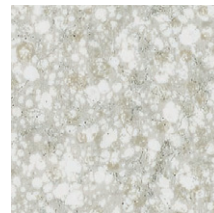
Gris

24082 004



Sable

24082 001



Porphyre

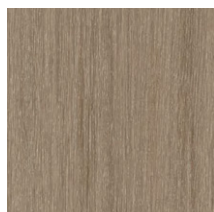
24082 002

Minimal Wood: Also available in TX Standing



Grege

25079 103



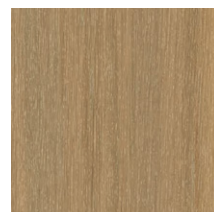
Dark

25079 102



Beige

25079 100



Natural

25079 101

| TECHNICAL DATA | STANDARDS | TX Modulaire |
|---------------------------------------|--|---|
| Classification | | |
| Type of floor Covering | ISO 11638 (EN 651) | |
| Classification | ISO 10874 (EN 685) domestic commercial | Classes: 23 31 |
| Characteristics | | |
| Total thickness | ISO 24346 (EN 428) | 3.05mm |
| Wear layer thickness | ISO 24340 (EN 429) | 0.27mm |
| Total weight | ISO 23997 (EN 430) | 2 575g/m ² |
| PUR Reinforcement | - | TopClean XP™ |
| Abrasion group | EN 660-2 | Group T: ≤ 2mm ³ |
| Technical performances | | |
| Residual indentation | Average measured value | 0.12mm |
| | Best measured value | 0.10mm |
| | ISO 24343-1 (EN 433) requirement | ≤ 0.25mm |
| Reaction to fire | EN 13501-1 | B _f s1 glued over any A2 _f or A1 _f substrate (concrete) & C _f s1 glued over any derivate wood substrate |
| Slip resistance | DIN 51130 EN 13893 | R9 ≥ 0.30 |
| Dimensional stability | ISO 23999 (EN 434) | < 0.10% |
| Furniture leg | EN 424 | No damage |
| Castor wheel test | ISO 4918 (EN 425) | No damage |
| Curl resultant to heat | ISO 23999 (EN 434) | < 2mm |
| Electrostatic properties | EN 1815 EN 1081 | ≤ 2kV on concrete support R1 > 10 ⁹ Ω |
| Chemical resistance | ISO 26987 (EN 423) | High resistance |
| Hygiene | - | Does not contribute to infection spreading |
| Thermal resistance Underfloor heating | EN ISO 10456 | 0.04m ² K/W Suitable |
| Light fastness | EN ISO 105-B02 | > 6 |
| Impact sound reduction | EN ISO 717/2 | ΔLw = 20dB |
| Acoustic improvement | NF S31-074 | L _{n,e,w} < 65dB |

The above information is subject to modifications for the benefit of further improvement (07/2015).
For more detailed technical information, please contact Tarkett.

Oak



Light

24081 002

TX MODULAIRE

Main Product Features

- Dedicated modular offer in planks and tiles
- Combination of classic and innovative designs and colors
- 20dB sound absorption
- Best score in the market for residual indentation

Surface Treatment



Sustainability Tag



(1) For all products produced in 2015

Logistics Information



Available in planks

100 x 25cm



Also available in tiles

Laying direction:



Esquisse
Minimal Wood
Oak Tree
Fiber Wood



Weathered Oak
Oak
Sahara
Mineral
Ciment
Moon



Cascade
Comblanchien

General Information



According to European
Classification ISO 10874 (EN 685)



Play with the Room Designer

TX MODULAIRE



Oak Tree - Snow



Oak Tree: Also available in TX Standing



Snow

25079 203



Grey

25079 202



Dark

25079 201



Beige

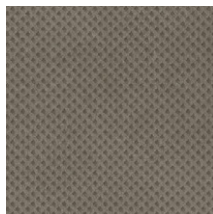
25079 200

Moon: Also available in TX Standing



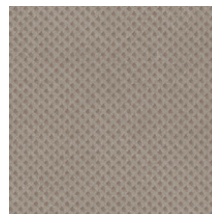
Vanilla

25080 301



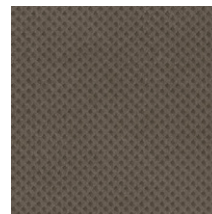
Smoke

25080 303



Mousse

25080 302



Tabac

25080 304



Plum

25080 309

Fiber Wood: Also available in TX Standing



Light Grey

25080 201



Grey

25080 200



Natural

25080 203



Grege

25080 202



Dark Brown

25080 204

Ciment: Also available in TX Standing



Mousse

25080 104



Grey

25080 100



Beige

25080 103



Brown

25080 102

| TECHNICAL DATA | STANDARDS | TX Modulaire |
|---------------------------------------|--|---|
| Classification | | |
| Type of floor Covering | ISO 11638 (EN 651) | |
| Classification | ISO 10874 (EN 685) domestic commercial | Classes: 23 31 |
| Characteristics | | |
| Total thickness | ISO 24346 (EN 428) | 3.05mm |
| Wear layer thickness | ISO 24340 (EN 429) | 0.27mm |
| Total weight | ISO 23997 (EN 430) | 2 575g/m ² |
| PUR Reinforcement | - | TopClean XP™ |
| Abrasion group | EN 660-2 | Group T: ≤ 2mm ³ |
| Technical performances | | |
| Residual indentation | Average measured value | 0.12mm |
| | Best measured value | 0.10mm |
| | ISO 24343-1 (EN 433) requirement | ≤ 0.25mm |
| Reaction to fire | EN 13501-1 | B _{fl} s1 glued over any A2 _{fl} or A1 _{fl} substrate (concrete) & C _{fl} s1 glued over any derivate wood substrate |
| Slip resistance | DIN 51130 EN 13893 | R9 ≥ 0.30 |
| Dimensional stability | ISO 23999 (EN 434) | < 0.10% |
| Furniture leg | EN 424 | No damage |
| Castor wheel test | ISO 4918 (EN 425) | No damage |
| Curl resultant to heat | ISO 23999 (EN 434) | < 2mm |
| Electrostatic properties | EN 1815 EN 1081 | ≤ 2kV on concrete support R1 > 10 ⁹ Ω |
| Chemical resistance | ISO 26987 (EN 423) | High resistance |
| Hygiene | - | Does not contribute to infection spreading |
| Thermal resistance Underfloor heating | EN ISO 10456 | 0.04m ² K/W Suitable |
| Light fastness | EN ISO 105-B02 | > 6 |
| Impact sound reduction | EN ISO 717/2 | ΔLw = 20dB |
| Acoustic improvement | NF S31-074 | L _{d,e,w} < 65dB |

The above information is subject to modifications for the benefit of further improvement (07/2015).
For more detailed technical information, please contact Tarkett.

Ciment : Also available in TX Standing



Dark

25080 101

TX MODULAIRE

Main Product Features

- Dedicated modular offer in planks and tiles
- Combination of classic and innovative designs and colors
- 20dB sound absorption
- Best score in the market for residual indentation

Surface Treatment



Sustainability Tag



(1) For all products produced in 2015

Logistics Information



Available in planks

100 x 25cm



Also available in tiles

Laying direction:



Esquisse
Minimal Wood
Oak Tree
Fiber Wood



Weathered Oak
Oak
Sahara
Mineral
Ciment
Moon



Cascade
Comblanchien

General Information



According to European
Classification ISO 10874 (EN 685)



Play with the Room Designer