

# TX STANDING



## The ideal solution developed for housing with innovation designs

### SENSORIAL BENEFITS

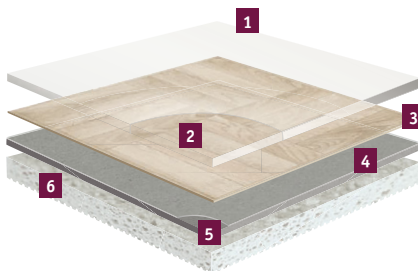
- Wide range of 58 colours and 11 designs
- New embossing technology giving the product a very matt surface aspect

### FUNCTIONAL BENEFITS

- Improved acoustic performance (up to 20dB)
- Low residual indentation

### ENVIRONMENTAL BENEFITS

- Phthalate-free technology
- ReStart® programme



- 1 TopClean XP PUR reinforcement:**  
*very high resistance to scratches and easy maintenance*
- 2 Pure PVC transparent wear layer:**  
*resistance to abrasion*
- 3 High definition print:**  
*for perfect designs*
- 4 Glass fibre non-woven reinforcement:**  
*superior dimensional stability*
- 5 Solid homogeneous calendered sheet made of recycled vinyl:**  
*resistance to indentation and tearing*
- 6 High density closed-cell foam backing:**  
*sound reduction and comfort underfoot*

TX STANDING

TECHNICAL DATA	STANDARDS	TX Standing
		2m
<b>Classification</b>		
Type of floor Covering	ISO 11638 (EN 651)	
Classification	ISO 10874 (EN 685) domestic commercial	Classes: 23 31
<b>Characteristics</b>		
Total thickness	ISO 24346 (EN 428)	3.25mm
Wear layer thickness	ISO 24340 (EN 429)	0.27mm
Total weight	ISO 23997 (EN 430)	2 920g/m <sup>2</sup>
PUR Reinforcement	–	TopClean XP
Abrasion group	EN 660-2	Group T: ≤ 2mm <sup>3</sup>
<b>Technical performances</b>		
Residual indentation	Average measured value	Average at 0.12 mm with the best value at 0.1mm
	ISO 24343-1 (EN 433)	≤ 20mm
Reaction to fire	EN 13501-1	B <sub>fl</sub> s1 glued over any A <sub>2</sub> <sub>fl</sub> or A1 <sub>fl</sub> substrate (concrete) & B <sub>fl</sub> s1 glued over any derivate wood substrate
Slip resistance	DIN 51130 EN 13893	R9 ≥ 0.30
Dimensional stability	ISO 23999 (EN 434)	≤ 0.10%
Furniture leg	EN 424	No damage
Castor wheel test	ISO 4918 (EN 425)	No damage
Curl resultant to heat	ISO 23999 (EN 434)	≤ 8mm
Electrostatic properties	EN 1815 EN 1081	≤ 2kV on concrete R1 > 10 <sup>9</sup> Ω
Chemical resistance	ISO 26987 (EN 423)	High resistance
Hygiene	–	Does not contribute to infection spreading
Thermal resistance Underfloor heating	EN ISO 10456	0.04m <sup>2</sup> K/W Suitable
Light fastness	EN ISO 105-B02	≥ 6
Impact sound reduction	EN ISO 10140-3 (EN 717-2)	20dB
Acoustic improvement	NF S31-074	L <sub>n,r,w</sub> < 65dB
<b>Form of delivery</b>		
Form of delivery	ISO 24341 (EN 426)	Rolls: 25lm x 2m
	ISO 24342 (EN 427)	

The above information is subject to modifications for the benefit of further improvement (07/2015).

For more detailed technical information, please contact Tarkett.



Play with the Room Designer

# TX STANDING



Seaside Wood - Beige



## Legacy Oak



Snow

25075 400



Grege

25075 401



Dark Grege

25075 402



Beige

25075 403



Blond

25075 404

## Light Oak



Brown

25075 405



Grey

25075 300



Brown

25075 301



Beige

25075 302



Natural

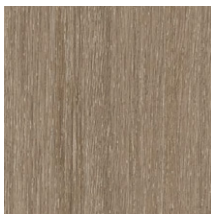
25075 303

## Minimal Wood: Also available in TX Modulaire



Grege

25075 103



Dark

25075 102



Beige

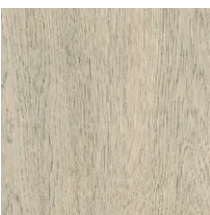
25075 100



Natural

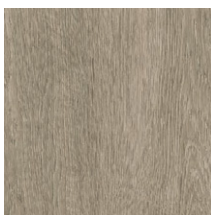
25075 101

## Oak Tree: Also available in TX Modulaire



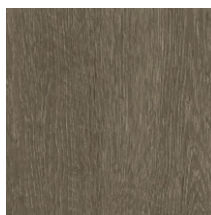
Snow

25075 203



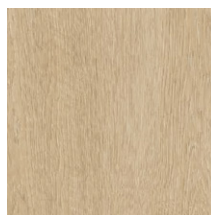
Grey

25075 202



Dark

25075 201



Beige

25075 200

TECHNICAL DATA	STANDARDS	TX Standing
		2m
<b>Classification</b>		
Type of floor Covering	ISO 11638 (EN 651)	
Classification	ISO 10874 (EN 685) domestic commercial	Classes: 23 31
<b>Characteristics</b>		
Total thickness	ISO 24346 (EN 428)	3.25mm
Wear layer thickness	ISO 24340 (EN 429)	0.27mm
Total weight	ISO 23997 (EN 430)	2 920g/m <sup>2</sup>
PUR Reinforcement	-	TopClean XP
Abrasion group	EN 660-2	Group T: ≤ 2mm <sup>3</sup>
<b>Technical performances</b>		
Residual indentation	Average measured value	Average at 0.12 mm with the best value at 0.1mm
	ISO 24343-1 (EN 433)	≤ 20mm
Reaction to fire	EN 13501-1	B <sub>fl</sub> s1 glued over any A2 <sub>fl</sub> or A1 <sub>fl</sub> substrate (concrete) & B <sub>fl</sub> s1 glued over any derivate wood substrate
Slip resistance	DIN 51130 EN 13893	R9 ≥ 0.30
Dimensional stability	ISO 23999 (EN 434)	≤ 0.10%
Furniture leg	EN 424	No damage
Castor wheel test	ISO 4918 (EN 425)	No damage
Curl resultant to heat	ISO 23999 (EN 434)	≤ 8mm
Electrostatic properties	EN 1815 EN 1081	≤ 2kV on concrete R1 > 10 <sup>9</sup> Ω
Chemical resistance	ISO 26987 (EN 423)	High resistance
Hygiene	-	Does not contribute to infection spreading
Thermal resistance Underfloor heating	EN ISO 10456	0.04m <sup>2</sup> K/W Suitable
Light fastness	EN ISO 105-B02	≥ 6
Impact sound reduction	EN ISO 10140-3 (EN 717-2)	20dB
Acoustic improvement	NF S31-074	L <sub>n,eq,T</sub> < 65dB

The above information is subject to modifications for the benefit of further improvement (07/2015).  
For more detailed technical information, please contact Tarkett.

## Seaside Wood



Snow Blue

25075 501



Beige

25075 500



Grey

25075 502

## TX STANDING

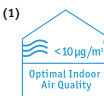
### Main Product Features

- New and innovative designs, especially developed for social housing
- New embossing technology giving the product a very matt surface aspect
- 20dB sound absorption
- Best score in the market for residual indentation

### Surface Treatment



### Sustainability Tag



(1) For all products produced in 2015

### Logistics Information



Available in rolls: 2m  
Rolls length: 251m

Laying direction:



Wood

Allover

### General Information



According to European Classification ISO 10874 (EN 685)



Play with the Room Designer

# TX STANDING




Minimal Wood - Natural



## French Oak



Snow

 25075 027



Grey

 25075 026



Grege

 25075 025



Pale

 25075 015




Natural

 25075 016




Teinte

 25075 017




Fonce

 25075 018

## Moon: Also available in TX Modulaire




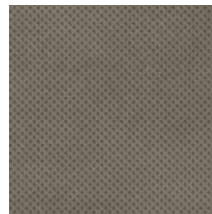
Vanilla

 25076 301



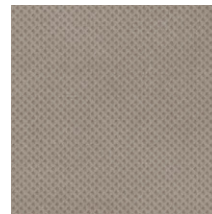
Plum

 25076 309



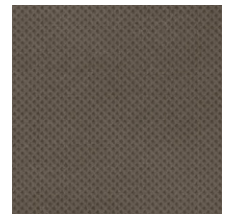
Smoke

 25076 303



Mousse

 25076 302




Tabac

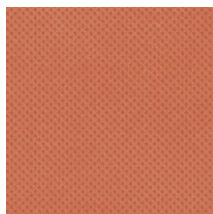
 25076 304

## Moon




Lavender

 25076 311



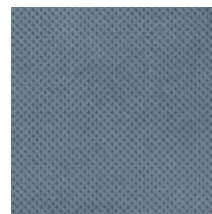
Terracotta

 25076 300




Lila

 25076 310



Denim

 25076 308



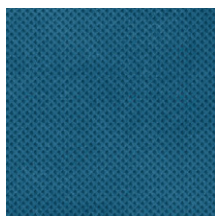
Sky

 25076 307

TECHNICAL DATA	STANDARDS	TX Standing
		2m
<b>Classification</b>		
Type of floor Covering	ISO 11638 (EN 651)	
Classification	ISO 10874 (EN 685) domestic commercial	Classes: 23 31
<b>Characteristics</b>		
Total thickness	ISO 24346 (EN 428)	3.25mm
Wear layer thickness	ISO 24340 (EN 429)	0.27mm
Total weight	ISO 23997 (EN 430)	2 920g/m <sup>2</sup>
PUR Reinforcement	-	TopClean XP
Abrasion group	EN 660-2	Group T: ≤ 2mm <sup>3</sup>
<b>Technical performances</b>		
Residual indentation	Average measured value	Average at 0.12 mm with the best value at 0.1mm
	ISO 24343-1 (EN 433)	≤ 20mm
Reaction to fire	EN 13501-1	B <sub>fl</sub> s1 glued over any A2 <sub>fl</sub> or A1 <sub>fl</sub> substrate (concrete) & B <sub>fl</sub> s1 glued over any derivate wood substrate
Slip resistance	DIN 51130 EN 13893	R9 ≥ 0.30
Dimensional stability	ISO 23999 (EN 434)	≤ 0.10%
Furniture leg	EN 424	No damage
Castor wheel test	ISO 4918 (EN 425)	No damage
Curl resultant to heat	ISO 23999 (EN 434)	≤ 8mm
Electrostatic properties	EN 1815 EN 1081	≤ 2kV on concrete R1 > 10 <sup>9</sup> Ω
Chemical resistance	ISO 26987 (EN 423)	High resistance
Hygiene	-	Does not contribute to infection spreading
Thermal resistance Underfloor heating	EN ISO 10456	0.04m <sup>2</sup> K/W Suitable
Light fastness	EN ISO 105-B02	≥ 6
Impact sound reduction	EN ISO 10140-3 (EN 717-2)	20dB
Acoustic improvement	NF S31-074	L <sub>n,e,w</sub> < 65dB

The above information is subject to modifications for the benefit of further improvement (07/2015).  
For more detailed technical information, please contact Tarkett.

## Moon



Aqua

25076 306



Grass

25076 305

## TX STANDING

### Main Product Features

- New and innovative designs, especially developed for social housing
- New embossing technology giving the product a very matt surface aspect
- 20dB sound absorption
- Best score in the market for residual indentation

### Surface Treatment



### Sustainability Tag



(1) For all products produced in 2015

### Logistics Information



Available in rolls: 2m  
Rolls length: 251m

Laying direction:



Wood

Allover

### General Information



According to European  
Classification ISO 10874 (EN 685)



Play with the Room Designer

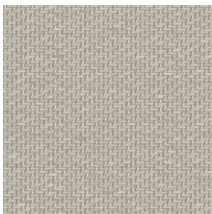
# TX STANDING



Oak Tree - Dark



## Textile



Mousse

25077 001



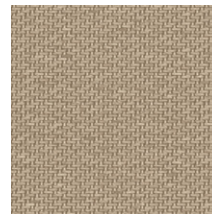
Beige

25077 002



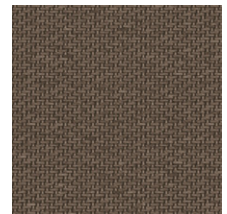
Sable

25077 004



Taupe

25077 003



Chocolat

25077 000

## Fiber Wood: Also available in TX Modulaire



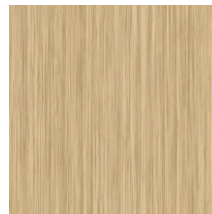
Light Grey

25076 201



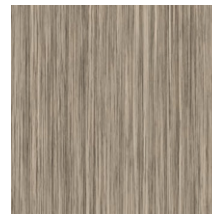
Grey

25076 200



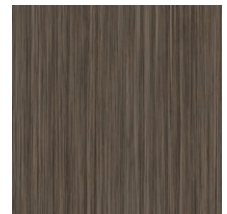
Natural

25076 203



Grege

25076 202



Brown

25076 204

## Ciment: Also available in TX Modulaire



Mousse

25076 104



Grey

25076 100



Beige

25076 103



Brown

25076 102



Dark

25076 101

TECHNICAL DATA	STANDARDS	TX Standing
		2m
<b>Classification</b>		
Type of floor Covering	ISO 11638 (EN 651)	
Classification	ISO 10874 (EN 685) domestic commercial	Classes: 23 31
<b>Characteristics</b>		
Total thickness	ISO 24346 (EN 428)	3.25mm
Wear layer thickness	ISO 24340 (EN 429)	0.27mm
Total weight	ISO 23997 (EN 430)	2 920g/m <sup>2</sup>
PUR Reinforcement	-	TopClean XP
Abrasion group	EN 660-2	Group T: ≤ 2mm <sup>3</sup>
<b>Technical performances</b>		
Residual indentation	Average measured value	Average at 0.12 mm with the best value at 0.1mm
	ISO 24343-1 (EN 433)	≤ 20mm
Reaction to fire	EN 13501-1	B <sub>fl</sub> s1 glued over any A2 <sub>fl</sub> or A1 <sub>fl</sub> substrate (concrete) & B <sub>fl</sub> s1 glued over any derivate wood substrate
Slip resistance	DIN 51130 EN 13893	R9 ≥ 0.30
Dimensional stability	ISO 23999 (EN 434)	≤ 0.10%
Furniture leg	EN 424	No damage
Castor wheel test	ISO 4918 (EN 425)	No damage
Curl resultant to heat	ISO 23999 (EN 434)	≤ 8mm
Electrostatic properties	EN 1815 EN 1081	≤ 2kV on concrete R1 > 10 <sup>9</sup> Ω
Chemical resistance	ISO 26987 (EN 423)	High resistance
Hygiene	-	Does not contribute to infection spreading
Thermal resistance Underfloor heating	EN ISO 10456	0.04m <sup>2</sup> K/W Suitable
Light fastness	EN ISO 105-B02	≥ 6
Impact sound reduction	EN ISO 10140-3 (EN 717-2)	20dB
Acoustic improvement	NF S31-074	L <sub>n,e,w</sub> < 65dB

The above information is subject to modifications for the benefit of further improvement (07/2015).  
For more detailed technical information, please contact Tarkett.

## Tisse



Mousse

25076 011



Sable

25076 012



Fontce

25076 006

## TX STANDING

### Main Product Features

- New and innovative designs, especially developed for social housing
- New embossing technology giving the product a very matt surface aspect
- 20dB sound absorption
- Best score in the market for residual indentation

### Surface Treatment



### Sustainability Tag



(1) For all products produced in 2015

### Logistics Information



Available in rolls: 2m  
Rolls length: 251m

Laying direction:



Wood



Allover

### General Information



According to European Classification ISO 10874 (EN 685)



Play with the Room Designer