

# VENETO ESSENZA



## The linoleum collection with traditional factory-applied acrylic non permanent finish, for Education and Offices

### SENSORIAL BENEFITS

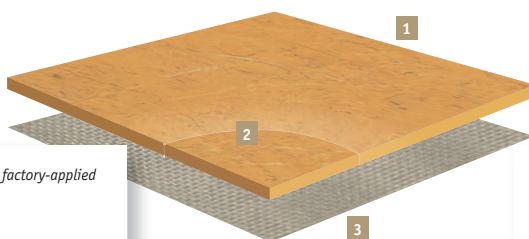
- Natural look
- 30 colours in the classical marbled design
- 30 colours available in Acoustic Cork 15dB version
- 20 colours are among the Grands Classiques♥ available until 2033
- Matching accessories, including multicolour welding rods for Grands Classiques

### FUNCTIONAL BENEFITS

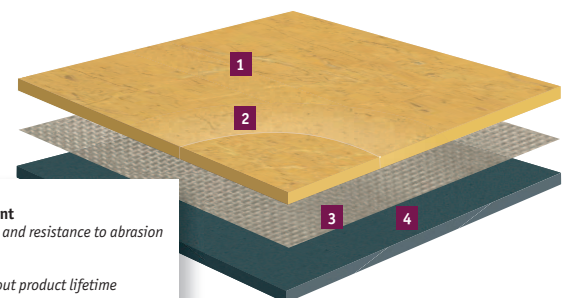
- Ready to walk on: no initial wax or polish needed
- Gloss level adjustable by polishing
- Naturally bactericidal

### ENVIRONMENTAL BENEFITS

- Natural and recyclable floor, made of natural and renewable ingredients
- C2C Gold for reference 100% linen, the colour made from nature - without pigments (see p. 387)
- Good indoor air quality (FloorScore certified)
- PU free



- 1 Non permanent factory-applied acrylic finish**
- 2 Pure linoleum**  
*stable design throughout product lifetime*
- 3 Jute backing**  
*excellent dimensional stability*



- 1 xF<sup>2</sup>™ surface treatment**  
*improved performance and resistance to abrasion*
- 2 Pure linoleum**  
*stable design throughout product lifetime*
- 3 Jute backing**  
*natural, 100% bio-degradable*
- 4 Cork Acoustic backing**  
*15dB sound reduction*

VENETO ESSENZA

VENETO ACOUSTIC CORK  
ESSENZA

TECHNICAL DATA	STANDARDS	Veneto Essenza 2.5mm	Veneto Acoustic Cork Essenza xf <sup>2</sup> ™ 4.4mm
<b>Classification</b>			
<b>Classification</b>	ISO 10874 (EN 685) domestic commercial light industrial	Classes: 23 34 43	Classes: 23 34 42
<b>Characteristics</b>			
<b>Surface Treatment</b>		acrylic	
<b>Total thickness</b>	ISO 24346 (EN 428)	2.50mm	4.4mm
<b>Total weight</b>	ISO 23997 (EN 430)	ca. 3 000g/m <sup>2</sup>	ca. 4 600g/m <sup>2</sup>
<b>Technical performances</b>			
<b>Reaction to fire</b>	EN 13501-1	C <sub>r</sub> s1	
<b>Residual indentation</b>	ISO 24343 (EN 433)	ca. 0.08mm	≤ 0.25mm
<b>Slip resistance</b>	DIN 51130 EN 13893	R9 DS: ≥ 0.30	
<b>Flexibility</b>	ISO 23344 (EN 435 Method A)	≤ 30mm	
<b>Castor chair</b>	ISO 4918 (EN 425)	Suitable for office chairs with castors type W (Norm EN 12529)	
<b>Static electrical propensity</b>	EN 1815	< 2kV	
<b>Chemical resistance</b>	ISO 26987 (EN 423)	Resistant to dilute acids,oils, fats, current solvents	
<b>Thermal resistance Underfloor heating</b>	ISO 10456 (EN 12524)	0.015m <sup>2</sup> K/W Suitable	0.045m <sup>2</sup> K/W Suitable
<b>Light fastness</b>	EN ISO 105-B02 Method 3	≥ 6	
<b>Impact sound reduction</b>	ISO 140-8 EN ISO 717-2	≤ 6dB	15dB
<b>Impact sound reduction with Elafono*</b>	ISO 140-8 EN ISO 717-2	14dB	Not applicable
<b>Acoustic improvement</b>	NF S31-074	—	Class B (Ln,e,w < 75dB)
<b>Determination of antibacterial activity</b>	ISO 22196	Yes, naturally	
<b>Form of delivery</b>	ISO 24341 (EN 426)	≤ 30 x 2m	≤ 27 x 2m or ≤ 27 x 1.95m (subject to availability - please check upon order)
<b>Colours</b>		30	on request: 30

\*Elafono: 2.0 mm traditional, natural corkment underlay to be installed in combination with any compact Tarkett linoleum to get additional sound reduction (up to -14dB, depending on the product). Available in rolls ≤30 x 2m.

The above information is subject to modifications for the benefit of further improvement (07/2015).

For more detailed technical information, please contact Tarkett.

### Grands Classiques ♥, a selection of 20 timeless colours available until 2033 in the following options:

- 2.0 - 2.5 - 3.2mm xf<sup>2</sup>MT
- 2.5mm Sicuro xf<sup>2</sup>MT R10
- 2.5mm Essenza
- 3.8mm Silencio xf<sup>2</sup>MT 18dB
- 4.0mm Veneto Acoustic Cork xf<sup>2</sup>MT
- 4.4mm Veneto Acoustic Cork xf<sup>2</sup>MT
- 4.4mm Veneto Acoustic Cork Essenza xf<sup>2</sup>MT
- multicolour welding rods

Find them on the following pages marked with ♥



Download the product offer

# VENETO ESSENZA



Essenza - Zinc



Pebble

2.5mm: 1805 604  
4.4mm: 14882 604



Smoke

2.5mm: 1805 608  
4.4mm: 14882 608



Charcoal

2.5mm: 1805 610  
4.4mm: 14882 610



Camel

2.5mm: 1805 616  
4.4mm: 14882 616



Zinc

2.5mm: 1805 671  
4.4mm: 14882 671



Aluminium

2.5mm: 1805 672  
4.4mm: 14882 672



Steel

2.5mm: 1805 673  
4.4mm: 14882 673



Slate

2.5mm: 1805 674  
4.4mm: 14882 674



Cork

2.5mm: 1805 679  
4.4mm: 14882 679



Storm

2.5mm: 1805 702  
4.4mm: 14882 702



Sisal

2.5mm: 1805 611  
4.4mm: 14882 611



Neutral

2.5mm: 1805 710  
4.4mm: 14882 710



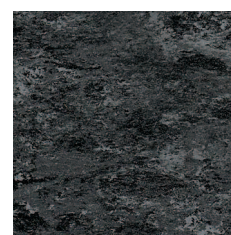
Ecrú

2.5mm: 1805 711  
4.4mm: 14882 711



Grey

2.5mm: 1805 793  
4.4mm: 14882 793




Graphite

2.5mm: 1805 906  
4.4mm: 14882 906

TECHNICAL DATA	STANDARDS	Veneto Essenza 2.5mm	Veneto Acoustic Cork Essenza xF2™ 4.4mm
<b>Classification</b>			
Classification	ISO 10874 (EN 685) domestic commercial light industrial	Classes: 23 34 43	Classes: 23 34 42
<b>Characteristics</b>			
Surface Treatment		acrylic	acrylic
Total thickness	ISO 24346 (EN 428)	2.50mm	4.4mm
Total weight	ISO 23997 (EN 430)	ca. 3 000g/m <sup>2</sup>	ca. 4 600g/m <sup>2</sup>
<b>Technical performances</b>			
Reaction to fire	EN 13501-1	C <sub>i</sub> s1	
Residual indentation	ISO 24343 (EN 433)	ca. 0.08mm	≤ 0.25mm
Slip resistance	DIN 51130 EN 13893	R9 DS: ≥ 0.30	
Flexibility	ISO 23344 (EN 435 Method A)	≤ 30mm	
Castor chair	ISO 4918 (EN 425)	Suitable for office chairs with castors type W (Norm EN 12529)	
Static electrical propensity	EN 1815	< 2kV	
Chemical resistance	ISO 26987 (EN 423)	Resistant to dilute acids,oils, fats, current solvents	
Thermal resistance Underfloor heating	ISO 10456 (EN 12524)	0.015m <sup>2</sup> K/W Suitable	0.045m <sup>2</sup> K/W Suitable
Light fastness	EN ISO 105-B02 Method 3	≥ 6	
Impact sound reduction	ISO 140-8 EN ISO 717-2	≤ 6dB	15dB
Impact sound reduction with Elafono*	ISO 140-8 EN ISO 717-2	14dB	Not applicable
Acoustic improvement	NF S31-074	—	Class B (L <sub>n,e,w</sub> < 75dB)
Determination of antibacterial activity	ISO 22196	Yes, naturally	


\*Elafono: 2.0 mm traditional, natural corkment underlay to be installed in combination with any compact Tarkett linoleum to get additional sound reduction (up to -14dB, depending on the product). Available in rolls ≤30 x 2m.


The above information is subject to modifications for the benefit of further improvement (07/2015). For more detailed technical information, please contact Tarkett.




**The ONLY  
linoleum awarded  
with C2C GOLD**

100% linen



 2.5mm: 1805 400

 4.4mm: 14882 400

## VENETO ESSENZA

### Traditional linoleum with acrylic finish surface protection

#### Main Product Features


- Ready to walk on: no initial wax or polish needed
- Gloss level adjustable by polishing
- Selection from the classical marbled design
- All 30 colours available on request in the Acoustic Cork 15dB version
- Essenza 100% linen awarded C2C Gold

#### Surface Treatment


factory-applied acrylic finish

#### Sustainability Tag

**Veneto Essenza xF2™**

96%	100%	
76%	35%	
Natural Renewable	Recyclable content	<100 µg/m <sup>3</sup> Better Indoor Air Quality *TVOC AT 28 DAYS

**Veneto Acoustic Cork xF2™**

93%	100%	
77%	33%	
Natural Renewable	Recyclable content	<100 µg/m <sup>3</sup> Better Indoor Air Quality *TVOC AT 28 DAYS

#### Logistics Information

 (2.5mm)

 Acoustic Cork (4.4mm)

**Available in rolls**  
**Rolls length: ≤30m**

**Available in rolls**  
**Rolls length: ≤27m**

Laying direction: 

#### General Information

**Veneto Essenza**

0200-0011-DoP-2013-07  
<http://professionals.tarkett.com>

Manufactured by Tarkett SpA  
05035 Narni, ITALY

EN 14041:2004

According to European Classification ISO 10874 (EN 685)

**Acoustic Cork xF2™ 4.4mm**

0200-0025-DoP-2013-07  
<http://professionals.tarkett.com>

Manufactured by Tarkett SpA  
05035 Narni, ITALY

EN 14041:2004

According to European Classification ISO 10874 (EN 685)

# VENETO ESSENZA



Essenza - Terracotta



Corn

2.5mm: 1805 612  
4.4mm: 14882 612



Sunflower

2.5mm: 1805 628  
4.4mm: 14882 628



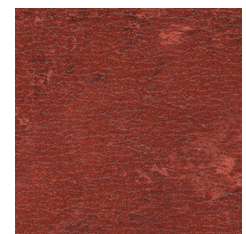
Amber

2.5mm: 1805 636  
4.4mm: 14882 636



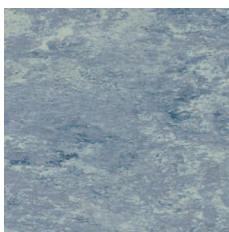
Terracotta

2.5mm: 1805 641  
4.4mm: 14882 641



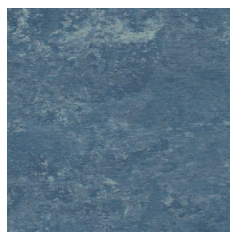
Raspberry

2.5mm: 1805 945  
4.4mm: 14882 645



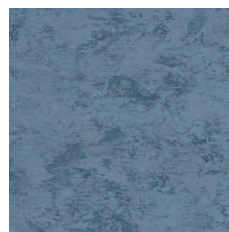
Horizon

2.5mm: 1805 663  
4.4mm: 14882 663



Ocean

2.5mm: 1805 665  
4.4mm: 14882 665



Lavender

2.5mm: 1805 670  
4.4mm: 14882 670



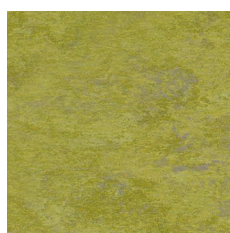
Deep Blue

2.5mm: 1805 767  
4.4mm: 14882 767



Sage

2.5mm: 1805 753  
4.4mm: 14882 753



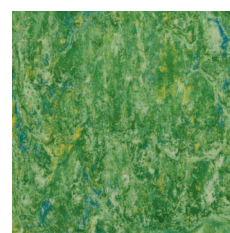
Absinthe

2.5mm: 1805 695  
4.4mm: 14882 695



Apple Green

2.5mm: 1805 754  
4.4mm: 14882 754



Grass

2.5mm: 1805 650  
4.4mm: 14882 650

TECHNICAL DATA	STANDARDS	Veneto Eszenza 2.5mm	Veneto Acoustic Cork Eszenza xF <sup>2</sup> ™ 4.4mm
<b>Classification</b>			
Classification	ISO 10874 (EN 685) domestic commercial light industrial	Classes: 23 34 43	Classes: 23 34 42
<b>Characteristics</b>			
Surface Treatment		acrylic	acrylic
Total thickness	ISO 24346 (EN 428)	2.50mm	4.4mm
Total weight	ISO 23997 (EN 430)	ca. 3 000g/m <sup>2</sup>	ca. 4 600g/m <sup>2</sup>
<b>Technical performances</b>			
Reaction to fire	EN 13501-1	C <sub>i</sub> s1	
Residual indentation	ISO 24343 (EN 433)	ca. 0.08mm	≤ 0.25mm
Slip resistance	DIN 51130 EN 13893	R9 DS: ≥ 0.30	
Flexibility	ISO 23344 (EN 435 Method A)	≤ 30mm	
Castor chair	ISO 4918 (EN 425)	Suitable for office chairs with castors type W (Norm EN 12529)	
Static electrical propensity	EN 1815	< 2kV	
Chemical resistance	ISO 26987 (EN 423)	Resistant to dilute acids,oils, fats, current solvents	
Thermal resistance Underfloor heating	ISO 10456 (EN 12524)	0.015m <sup>2</sup> K/W Suitable	0.045m <sup>2</sup> K/W Suitable
Light fastness	EN ISO 105-B02 Method 3	≥ 6	
Impact sound reduction	ISO 140-8 EN ISO 717-2	≤ 6dB	15dB
Impact sound reduction with Elafono*	ISO 140-8 EN ISO 717-2	14dB	Not applicable
Acoustic improvement	NF S31-074	—	Class B (L <sub>n,e,w</sub> < 75dB)
Determination of antibacterial activity	ISO 22196	Yes, naturally	

\*Elafono: 2.0 mm traditional, natural corkment underlay to be installed in combination with any compact Tarkett linoleum to get additional sound reduction (up to -14dB, depending on the product). Available in rolls ≤30 x 2m.


The above information is subject to modifications for the benefit of further improvement (07/2015).

For more detailed technical information, please contact Tarkett.



Eggshell

 2.5mm: 1805 619

 4.4mm: 14882 619

# VENETO ESSENZA

## Traditional linoleum with acrylic finish surface protection

### Main Product Features


- Ready to walk on: no initial wax or polish needed
- Gloss level adjustable by polishing
- Selection from the classical marbled design

### Surface Treatment


factory-applied acrylic finish

### Sustainability Tag

**Veneto Eszenza xF<sup>2</sup>™**

96% 76%	100% 35%	
Natural Renewable	Recyclable Recycled content	Better Indoor Air Quality
*TVOC AT 28 DAYS		

**Veneto Acoustic Cork xF<sup>2</sup>™**

93% 77%	100% 33%	
Natural Renewable	Recyclable Recycled content	Better Indoor Air Quality
*TVOC AT 28 DAYS		

### Logistics Information



(2.5mm)

Available in rolls  
Rolls length: ≤30lm



Acoustic Cork  
(4.4mm)

Available in rolls  
Rolls length: ≤27lm

Laying direction:



### General Information

 <b>Veneto Eszenza</b> 0200-0011-DoP-2013-07 <a href="http://professionals.tarkett.com">http://professionals.tarkett.com</a> Manufactured by: Tarkett SpA 05035 Narni, ITALY EN 14041:2004	 According to European Classification ISO 10874 (EN 685)
	 According to European Classification ISO 10874 (EN 685)
 <b>Acoustic Cork 4.4mm</b> 0200-0025-DoP-2013-07 <a href="http://professionals.tarkett.com">http://professionals.tarkett.com</a> Manufactured by: Tarkett SpA 05035 Narni, ITALY EN 14041:2004	 According to European Classification ISO 10874 (EN 685)
	 According to European Classification ISO 10874 (EN 685)