

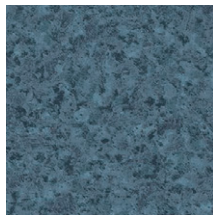


**Granite**



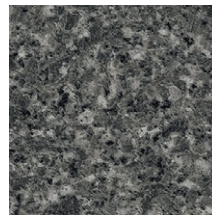
Grey

4697 005



Blue

4697 007



Black

4697 004



Red

4697 006

**Concrete**



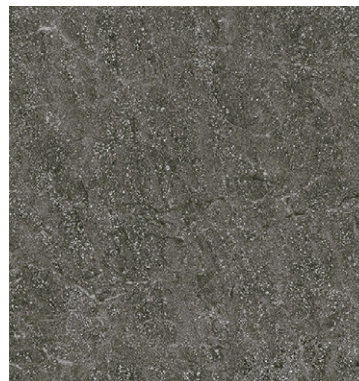
Beige

24750 000



Grey

24750 001



Dark Grey

24750 002

TECHNICAL DATA	STANDARDS	iD TILT
<b>Classification</b>		
Type of floorcovering	EN ISO 10582 - EN 649	Modular heterogeneous product with interlocking connection
CE certification	EN 14041	Yes
Classification	EN ISO 10874 - EN 685	Commercial: 34 Industrial: 43
<b>Characteristics</b>		
Total thickness	EN ISO 24346 - EN 428	5,0 mm
Wear layer thickness	EN ISO 24340 - EN 429	0,70 mm
Surface treatment (PUR)		Yes
Total weight/m <sup>2</sup>	EN ISO 23997 - EN 430	8 000 g
Abrasion group	EN 660-2 EN ISO 10582	≤ 2.00 mm <sup>3</sup> Type I
<b>Technical performances</b>		
Dimensional stability	EN ISO 23999 - EN 434	< 0.15%
Reaction to fire	EN 13501-1	Bfl s1 over any derivative panel
Residual indentation	EN ISO 24343-1 - EN 433	< 0.10 mm
Furniture leg	ISO 16581 - EN 424	Pass
Castor chair	ISO 4918 - EN 425	Pass
Curl resultant to heat	ISO 23999 - EN 434	≤ 2 mm
Impact sound reduction	EN ISO 717-2	ΔLw = 6 dB
Thermal resistance	EN ISO 10456	approx. 0.05 m <sup>2</sup> K/W
Light fastness	EN ISO 105-B02	≥ 6
Chemical resistance	EN ISO 26987 - EN 423	Resistance
Slip resistance	EN 13893 DIN 51130	μ ≥ 0.30 DS R9
Electrostatic properties	EN 1815	< 2 kV on concrete
	EN 1081	R1 > 109 Ω
Colours		Granit: 4 - Concrete: 3

Technical data in force upon the date of publication (07/2015).

The values correspond to laboratory tests (no in situ test) and are subject to modification.

Tarkett's instructions regarding installation, cleaning and maintenance shall be observed.

Please contact your local sales rep. for these instructions.

## iD TILT

# Concrete & Granite

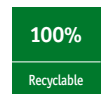
## Main Product Features

- 7 designs and 2 formats to perfectly fit to your project
- Extreme connection resistance, for long-lasting performance in high traffic areas
- Easy and quick installation thanks to its interlocking connection (no glue, no click)
- Excellent value for money

## Surface Treatment



## Sustainability Tag



(1) For all products produced in 2015

## Logistics Information



Available in tile with interlocking connection system

Laying direction:  
Checkboard pattern installation recommended (to mask the joints)

## General Information



Play with the Room Designer